



# SeaBat<sup>®</sup> 8160

## MULTIBEAM ECHO SOUNDER SYSTEM

The SeaBat 8160 provides an unbeatable combination of range, resolution & profitability, a first for a system of this frequency range.

The SeaBat 8160 transducer array is comprised of a linear receive and transmit array mounted together on a support base. The T-shaped array geometry provides the basis for a compact, high-resolution sonar which is easily installed for portable or hull mounts - a first for a high-resolution system in this frequency range.

The system features a pitch-stabilized transmitter and an active roll compensated receiver.

The SeaBat 8160 processor is compatible with other Sea-Bat sonar heads. It can be updated in minutes to accommodate future requirements and features a user-friendly point-and-click interface.

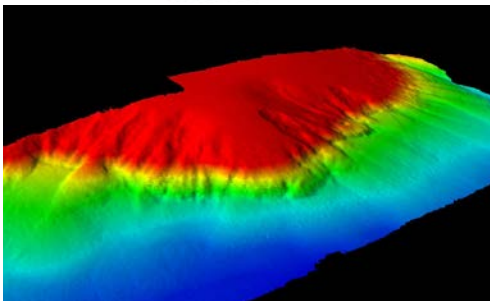
### PRODUCT LOGBOOK



FREQUENCY	50kHz (nominal)
SWATH	Swath coverage greater than 4 x water depth
DEPTH	Operational depths 10m to 3000m
BEAMS	126 beams
FLEXIBLE	Hull-mount or portable
SONAR	Sidescan

## SEABAT 8160 SYSTEM SPECIFICATIONS

FREQUENCY	50kHz (nominal)
DEPTH RESOLUTION	1.4 / 2.9 / 8.6cm (range dependent)
SWATH COVERAGE	Greater than 4x water depth
TYPICAL DEPTH	3m to 2750m
MAX DEPTH	3000m
NUMBER OF BEAMS	126
ALONG-TRACK BEAMWIDTH	1.5°, 3.0°, 4.5°, 6.0° (selectable)
ACROSS-TRACK BEAMWIDTH	1.5° at nadir (nominal)
PITCH STABILIZATION	±10°
MAX UPDATE RATE	15
TRANSDUCER DEPTH RATING	100m
SYSTEM SUPPLY	115V/230V 50/60 Hz,350W
SYSTEM CONTROL	Trackball or from Ethernet
DATA OUTPUT	10MB Ethernet or serial RS232C
DATA UPLINK	High-speed digital coax with fiber-optic option
TEMPERATURE: OPERATING, STORAGE	0° to +40°C, storage: -30° to +55°C
TRANSDUCER ARRAY DIMENSION	1474mm x 1100mm x 90mm
DIMENSION TRANSCIEVER ARRAY	265mm x 483mm x 492mm
WEIGHT HYDROPHONE	42kg (air) / 17.5kg (water) including 15m cable
WEIGHT TRANSMITTER	37kg (air) / 18.5kg (water) including 15m cable



### WHY CHOOSE A SEABAT 8160?

- High-resolution sonar which is easily installed for portable or hull mounts
- High performance - excellent swath
- Continental shelf mapping wizard
- Processor is compatible with other SeaBat sonar heads
- Versatile

For more details visit [www.reson.com](http://www.reson.com) or contact your local RESON Office. RESON reserves the right to change specifications without notice. 2010©RESON

RESON A/S  
Denmark  
Tel: +45 4738 0022  
[reson@reson.com](mailto:reson@reson.com)

RESON Inc.  
U.S.A.  
Tel: +1 805 964-6260  
[sales@reson.com](mailto:sales@reson.com)

RESON OFFSHORE Ltd.  
Scotland U.K.  
Tel: +44 1224 709 900  
[sales@reson.co.uk](mailto:sales@reson.co.uk)

RESON GmbH  
Germany  
Tel: +49 (0) 431 720 7180  
[reson@reson-gmbh.de](mailto:reson@reson-gmbh.de)

RESON B.V.  
The Netherlands  
Tel: +31 (0) 10 245 1500  
[info@reson.nl](mailto:info@reson.nl)

RESON Pte. Ltd.  
Singapore  
Tel: +65 6725 9851  
[singapore@reson.com](mailto:singapore@reson.com)