



# HydroBat™ Composite

## MULTIBEAM ECHO SOUNDER SYSTEM

HydroBat is an entry-level multibeam operating at 160kHz which covers a wide swath of 3.4x depth. A single integrated transducer may easily be deployed over the side of a small boat or permanently mounted as needed. With an advanced autopilot, high ping rate and a combination of amplitude and phase bottom detect, HydroBat produces high quality bathymetry data exceeding international standards. Compact and portable, HydroBat is ideal for ports, harbours and inshore survey operations where cost is a critical factor.

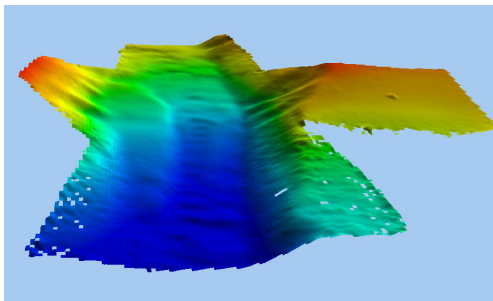
A highly integrated sonar processor with PDS2000 software completes the package and allows for fast, easy, hassle free installation & integration.

Like all RESON multibeams, HydroBat is backed up by the best service & support in the industry and over 20 years of experience building the world's premier shallow water multibeam systems.

PRODUCT LOGBOOK	
EFFICIENT	Generates high quality data fast
FREQUENCY	160 kHz frequency
SWATH	120°
BEAMS	112
PC HARDWARE	Included
SOFTWARE	PDS2000 version V060 PDS2000 version V090 (optional)
FULL SENSOR PACKAGE	GPS Motion & Heading sensor Sound velocity probe Mounting brackets Fairing kits

## HYDROBAT COMPOSITE SYSTEM SPECIFICATIONS

FREQUENCY	160 kHz
SWATH WIDTH	120°
NUMBER OF BEAMS	112
TYPICAL DEPTH	0.5m to 100m
MAX DEPTH	120m
PING RATE	20Hz +
WEIGHT OF TRANSDUCER AND CABLE	19kg air
ROLL STABILIZATION	Included
AUTOPILOT	Included
INTEGRATED SOFTWARE	PDS2000 included
PC HARDWARE	Included
SONAR PROCESSOR	19" rack mount chassis
MONITOR	EIZO S1901 HK Monitor, 19in, TFT, 1280 x 1024
VIDEO CARD	Capable of driving two high resolution monitors
MOTION SENSOR	SMC-108 30m depth rated IMU motion sensor
GPS	Trimble SPS461 DGPS with beacon receiver
SOUND VELOCITY PROBE; RANGE & ACCURACY	1350-1800 m/s & ±0.15m/s (0-50m), ±0.25m/s (2000m)
TRANSDUCER CABLE LENGTH	10m



### WHY CHOOSE A HYDROBAT COMPOSITE?

- Very high performance and flexibility for the money
- Integrated solution with full sensor package
- Excellent quality IHO compliant data
- Services and Support Agreement (SSA)

For more details visit [www.reson.com](http://www.reson.com) or contact your local RESON Office. RESON reserves the right to change specifications without notice. 2011©RESON

RESON A/S  
Denmark  
Tel: +45 4738 0022  
[reson@reson.com](mailto:reson@reson.com)

RESON Inc.  
U.S.A.  
Tel: +1 805 964-6260  
[sales@reson.com](mailto:sales@reson.com)

RESON OFFSHORE Ltd.  
Scotland U.K.  
Tel: +44 1224 709 900  
[sales@reson.co.uk](mailto:sales@reson.co.uk)

RESON GmbH  
Germany  
Tel: +49 (0) 431 720 7180  
[reson@reson-gmbh.de](mailto:reson@reson-gmbh.de)

RESON B.V.  
The Netherlands  
Tel: +31 (0) 10 245 1500  
[info@reson.nl](mailto:info@reson.nl)

RESON Pte. Ltd.  
Singapore  
Tel: +65 6725 9851  
[singapore@reson.com](mailto:singapore@reson.com)